

Facts and Figures 1997/98

Table of Contents

| | |
|---|-----------|
| Supervisory Board | 2 |
| Board of Management | 3 |
| Corporate Organisation Chart | 4 |
| Key Figures for the Group and for DB AG | 6 |
| DB AG Workforce | 7 |
| Traction Units/Locomotives/Ships/Ferries | 8 |
| Business Units | |
| ● Local Passenger Traffic | 9 |
| ● Long-Distance Passenger Traffic | 10 |
| ● Passenger Stations | 12 |
| ● DB Cargo | 13 |
| ● Track Infrastructure | 14 |
| Balance Sheet | |
| ● Company | 16 |
| ● Group | 18 |
| Profit and Loss Account | |
| ● Company | 20 |
| ● Group | 21 |
| Substantial Investments | 22 |
| Contact Details | |
| Management Representatives for the Federal States | 24 |
| Corporate Communications Division | 25 |
| Glossary | 28 |
| Impressum | 30 |

Supervisory Board

Dr.-Ing. E.h. Heinz Dürr
Chairman
Berlin
(as from 9 July 1997)

Dr. Günther Sassmannshausen
Chairman
Hanover
(to 9 July 1997)
Honourary Chairman
(as from 9 July 1997)

Rudi Schäfer*
Deputy Chairman
Chairman of the German
Railworkers Union (GdED)
Frankfurt am Main

Christian Bormann*
DB AG
Erfurt

Niels Lund Chrestensen
N. L. Chrestensen GmbH
Erfurt

Dr.-Ing. E.h. Dipl.-Ing.
Hermann Franz
Chairman of the Supervisory Board
Siemens AG
Munich

Norbert Hansen*
Deputy Chairman of the German
Railworkers Union (GdED)
Frankfurt am Main

Marlies Helling*
DB AG
Frankfurt am Main

Hans Jochen Henke
Permanent Secretary
Federal Transport Ministry
Bonn

Heinz Hermanns*
DB AG
Cologne

Bernhard Ivo*
Area Head of the German
Railworkers Union (GdED)
Essen

Willi Klussmeier*
DB AG
Essen

Dr. rer. pol. Horst Köhler
President of the German Savings
Bank and Giro Association
Bonn

Roland Kohn
Member of the German Bundestag
Bonn

Dr. rer. pol. Hermann Krämer
Member of the Board of Directors
VEBA AG
Düsseldorf

Dr. E.h. Helmut Maucher
President of the Board of Directors
Nestlé S.A.
Vevey/Switzerland

Werner Mössinger*
Chairman of the General Works
Council
DB AG
Frankfurt am Main

Dr. h.c. Friedel Neuber
Chairman of the Board of Directors
Westdeutsche Landesbank
Girozentrale
Düsseldorf

Lothar Schote*
DB AG
Bad Homburg

Horst Skrzipek*
DB AG
Cologne

Dr. Jürgen Stark
Permanent Secretary
Federal Finance Ministry
Bonn

* Workforce Representatives

Board of Management

Dr. Johannes Ludewig
Chairman
(as from 9 July 1997)

Dr.-Ing. E.h. Heinz Dürr
Chairman
(to 9 July 1997)

Diethelm Sack
Director Finance and Controlling

Dr. Horst Föhr
Director Personnel

Peter Reinhardt
Director Real Estate, Legal Affairs,
Passenger Stations

Roland Heinisch
Director Research and Technology

Heinz Neuhaus
Director Long-Distance Passenger
Traffic
(to 13 May 1998)

Dr. Axel Nawrocki
Director Long-Distance Passenger
Traffic
(as from 13 May 1998)

Klaus Daubertshäuser
Director Local Passenger Traffic

Dr. Eberhard Sinnecker
Director Freight Traffic

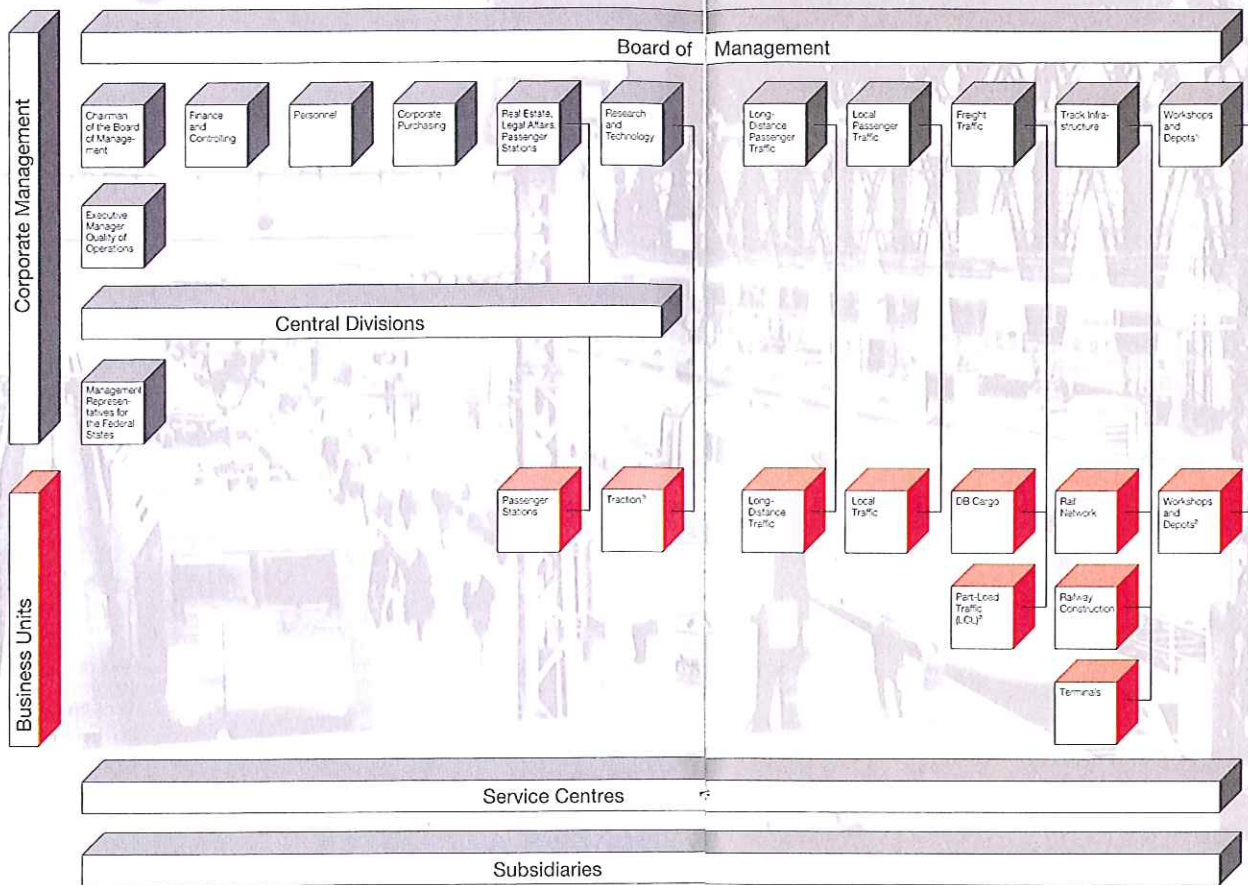
Peter Münchschwander
Director Track Infrastructure

Prof. Dr. Ulf Häusler
Director Track Infrastructure

Hermann Wolters
Director Workshops and Depots
(to 31 January 1998)

Wolfgang Gemeinhardt
Director Corporate Purchasing

Corporate Organisation Chart



¹⁾ to 31 January 1993
²⁾ to 31 December 1997

Key Figures for the Group

| | 1995 | 1996 | 1997 |
|-------------------------------|---------|---------|---------|
| Turnover (DM m) | 29,824 | 30,221 | 30,466 |
| Pre-tax profits (DM m) | 553 | 721 | 359 |
| Workforce (at year end) | 312,579 | 288,768 | 268,273 |
| Balance sheet total (DM m) | 52,064 | 57,935 | 66,287 |
| Equity capital (DM m) | 12,279 | 13,125 | 16,473 |
| Capital expenditure (DM m) | 10,131 | 10,621 | 13,957 |
| Cash-flow before taxes (DM m) | 2,826 | 3,475 | 3,585 |

Key Figures for DB AG

| | 1995 | 1996 | 1997 |
|-------------------------|---------|---------|---------|
| Turnover (DM m) | 23,655 | 24,401 | 24,468 |
| Pre-tax profits (DM m) | 390 | 715 | 582 |
| Workforce (at year end) | 276,957 | 246,859 | 223,523 |

DB AG Workforce

| | 31 Dec 1996 | 31 Dec 1997 |
|--|-------------|-------------|
| Total workforce | 246,859 | 223,523 |
| Long-Distance Passenger Traffic Business Unit | 18,757 | 17,797 |
| Local Passenger Traffic Business Unit | 14,865 | 13,752 |
| Passenger Stations Business Unit | 6,756 | 5,754 |
| Freight Traffic Business Unit | 27,454 | 22,463 |
| Part-Load Traffic (LCL) Business Unit | 5,218 | 845 |
| Rail Network Business Unit | 72,817 | 65,996 |
| Terminals Business Unit | 651 | 598 |
| Railway Construction Business Unit | 13,058 | 8,848 |
| Traction Business Unit | 35,811 | 33,113 |
| Workshops and Depots Business Unit | 40,971 | 33,112 |
| Central Divisions/Central Management/Service Centers | 10,501 | 21,245 |
| Subtotals: | | |
| Apprentices/trainees ¹⁾ | 16,336 | 15,619 |
| – training ratio (%) | 7.0 | 7.0 |
| Female staff | 37,945 | 34,166 |
| – as a percentage | 15.4 | 15.3 |
| Foreign staff | 6,427 | 5,503 |
| Public officials | 87,891 | 77,476 |
| Public officials on permanent leave | 1,250 | 1,958 |
| Part-time staff ²⁾ | 6,695 | 5,876 |
| – as a percentage | 2.7 | 2.6 |

¹⁾ including those gaining work experience

²⁾ wage and salary earners



Traction Units and Locomotives

| | 31 Dec 1996 | 31 Dec 1997 |
|--|-------------|-------------|
| ICE 1 power cars | 120 | 120 |
| ICE 2 power cars | 20 | 46 |
| Electric locomotives | 3,535 | 3,579 |
| Diesel locomotives | 2,864 | 2,796 |
| Light rail motor tractors | 2,244 | 2,024 |
| Railcars | | |
| • Rapid transit vehicles, DC ¹⁾ | 507 | 534 |
| • Rapid transit vehicles, AC | 1,422 | 1,438 |
| • Diesel railcars | 726 | 618 |
| Rail buses | 141 | 147 |
| Steam locomotives | 31 | 22 |

¹⁾ Hamburg rapid transit network (S-Bahn)

Ships and ferries

| | | |
|----------------|----|----|
| DFO | 7 | 7 |
| Lake Constance | 17 | 17 |



Local Passenger Traffic¹⁾

| | 31 Dec 1996 | 31 Dec 1997 |
|---|----------------|----------------------|
| Number on payroll | 14,865 | 13,752 |
| Turnover (DM m) ¹⁾ | 1996 10,829 | 1997 11,173 |
| Capital expenditure (DM m) | 1,399 | 1,178 |
| Orders from federal states (DM m) | 7,462 | 7,782 |
| Passenger traffic performance ¹⁾ | | |
| Passengers (million) | 1,204 | 1,230 |
| Passengers per day (million) | 3.3 | 3.4 |
| Passenger kilometres (million) | 29,237 | 28,077 |
| Trains per day (approx.) | 27,000 | 30,500 ²⁾ |
| Mean distance travelled (km) | 24.3 | 22.8 |

| Vehicles | 31 Dec 1996 | 31 Dec 1997 |
|--|-------------|-------------|
| Total | 13,008 | 12,593 |
| • Rapid transit vehicles, DC ³⁾ | 507 | 534 |
| • Rapid transit vehicles, AC | 1,422 | 1,438 |
| • Double-decker vehicles | 1,054 | 1,256 |

| Ticket vending machines | 31 Dec 1996 | 31 Dec 1997 |
|-------------------------|-------------|-------------|
| Total | 5,085 | 5,065 |

¹⁾ Figures include the S-Bahn Hamburg GmbH company demerged in 1997

²⁾ Incl. Berlin and Hamburg rapid transit networks (S-Bahn)

³⁾ S-Bahn Hamburg GmbH



Long-Distance Passenger Traffic¹⁾

| | 31 Dec 1996 | 31 Dec 1997 |
|--------------------------|-------------|-------------|
| Number on payroll | 18,757 | 17,797 |

| | 1996 | 1997 |
|------------------------|-------|-------|
| Turnover (DM m) | 5,350 | 5,446 |

| | | |
|-----------------------------------|-----|-------|
| Capital expenditure (DM m) | 696 | 1,092 |
|-----------------------------------|-----|-------|

Passenger traffic performance

Passengers (million)

| | | |
|--------------|-------|-------|
| Total | 144.5 | 145.4 |
| ICE | 23.6 | 27.0 |
| IC/EC | 52.8 | 50.2 |
| IR/D/ICNight | 64.8 | 63.3 |

| | | |
|-------------------------------------|------|------|
| Passengers per day (million) | 0.40 | 0.40 |
|-------------------------------------|------|------|

| | | |
|---------------------------------|-------|-------|
| Trains per day (approx.) | 1,000 | 1,000 |
|---------------------------------|-------|-------|

Passenger kilometres (million)

| | | |
|--------------|----------|----------|
| Total | 31,264.0 | 30,989.2 |
| ICE | 8,178.0 | 8,864.9 |
| IC/EC | 12,265.5 | 11,363.6 |
| IR/D/ICNight | 9,887.8 | 9,696.1 |

Mean distance travelled (km)

| | | |
|--------------|-------|-------|
| Total | 216.4 | 213.1 |
| ICE | 346.5 | 328.3 |
| IC/EC | 232.3 | 226.4 |
| IR/D/ICNight | 152.6 | 153.2 |

| Vehicles | 31 Dec 1996 | 31 Dec 1997 |
|----------|-------------|-------------|
|----------|-------------|-------------|

ICE 1:

| | | |
|----------------------|-----|-----|
| Number of power cars | 120 | 120 |
| Intermediate cars | 634 | 718 |
| First Class cars | 198 | 198 |
| Second Class cars | 436 | 460 |

ICE 2:

| | | |
|----------------------|----|-----|
| Number of power cars | 20 | 46 |
| Driving trailers | - | 24 |
| Intermediate cars | 77 | 256 |
| First Class cars | 32 | 82 |
| Second Class cars | 45 | 129 |

IC/EC:

| | | |
|-------------------|-------|-------|
| First Class cars | 685 | 683 |
| Second Class cars | 1,445 | 1,452 |

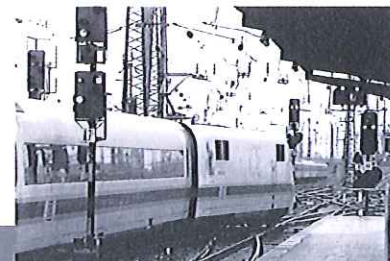
IR/D:

| | | |
|---------------------|-------|-------|
| First Class cars | 458 | 455 |
| Second Class cars | 1,751 | 1,650 |
| InterCityNight Cars | 112 | 150 |
| Sleepers | 166 | 163 |
| Couchette Cars | 440 | 458 |
| Club Cars | 80 | 56 |

Seating

| | | |
|--------------------|---------|---------|
| First Class total | 52,875 | 59,213 |
| Second Class total | 217,628 | 246,709 |

¹⁾ 1996 figures do not include the demerged company
Bodensee Schifffahrtbetriebe GmbH



Passenger Stations

| | 31 Dec 1996 | 31 Dec 1997 |
|----------------------------|----------------------|----------------------|
| Number on payroll | 6,756 | 5,754 |
| Capital expenditure (DM m) | 1996 358 | 1997 411 |
| Maintenance (DM m) | 431 | 485 |
| Number of stations | 31 Dec 1996 6,302 | 31 Dec 1997 6,154 |



DB Cargo

| | 31 Dec 1996 | 31 Dec 1997 |
|---|------------------------|------------------------|
| Number on payroll | 27,454 | 22,463 |
| Turnover (DM m) | 1996 6,606 | 1997 6,694 |
| Capital expenditure (DM m) | 197 | 406 |
| Freight traffic performance | | |
| Goods carried (million tonnes) | 287.9 | 294.9 |
| Revenue tonne-km (million) | 67,369.0 | 72,388.8 |
| Trains per day (approx.) | 7,000 | 7,300 |
| Operating performance figures: | | |
| Net tonne-kilometres (million) | 78,952 | 80,257 |
| Gross tonne-kilometres (million) | 169,096 | 170,125 |
| Axle-kilometres (million) | 15,098 | 14,730 |
| Av. no. of axles per train | 73.8 | 78.6 |
| Freight wagons | | |
| Total | 31 Dec 1996 163,778 | 31 Dec 1997 147,237 |
| Covered wagons | 52,047 | 42,412 |
| Open wagons | 51,805 | 47,386 |
| Flats | 57,880 | 55,431 |
| Silo wagons | 2,046 | 2,008 |
| Reg. privately owned vehicles | 71,229 | 65,781 |
| Hired vehicles | 1,602 | 573 |
| Loading capacity of freight wagons (000 t) | | |
| Total | 5,864 | 6,276 |
| Covered wagons | 1,154 | 1,320 |
| Open wagons | 2,102 | 2,172 |
| Flats | 2,553 | 2,727 |
| Silo wagons | 56 | 58 |



Track Infrastructure (Rail Network, Railway Construction, Terminals)

| | | |
|--------------------------|--------------------|--------------------|
| | 31 Dec 1996 | 31 Dec 1997 |
| Number on payroll | 86,526 | 75,442 |

| | | |
|------------------------|-------------|-------------|
| | 1996 | 1997 |
| Turnover (DM m) | 437 | 536 |

| | | |
|-----------------------------------|-------|-------|
| Capital expenditure (DM m) | 9,126 | 8,666 |
|-----------------------------------|-------|-------|

Operating performance (million km)

| | | |
|--|-----|-----|
| Train-km for long-distance passenger traffic | 164 | 171 |
| Train-km for local passenger traffic ¹⁾ | 469 | 475 |
| Train-km for freight traffic | 205 | 191 |

Length of line operated (km)

| | | |
|--------------------|---------------|---------------|
| Standard gauge | 40,726 | 38,384 |
| Narrow gauge | 100 | 66 |
| Total | 40,826 | 38,450 |
| Length electrified | 18,460 | 18,652 |

| | | |
|--------------------------------|---------------|---------------|
| Total track length (km) | 73,089 | 70,713 |
|--------------------------------|---------------|---------------|

Number of points, switches and crossings²⁾

| | | |
|--|---------|---------|
| | 116,564 | 110,610 |
|--|---------|---------|

Interlockings

| | | |
|------------------------------------|-------|-------|
| Total | 7,067 | 6,850 |
| Number of electronic interlockings | 61 | 83 |

Level crossings

| | | |
|----------------------------------|--------|--------|
| Total | 28,410 | 28,047 |
| Number with safety installations | 14,170 | 13,716 |

| | | |
|---------------------------------------|-------------|-------------|
| | 1996 | 1997 |
| Number of tunnels³⁾ | 660 | 660 |

| | | |
|------------------------|--------|--------|
| Railway bridges | 32,500 | 32,548 |
|------------------------|--------|--------|

| | | |
|------------------------|-------|-------|
| Private sidings | 9,264 | 7,524 |
|------------------------|-------|-------|

| | | |
|----------------------------|----|----|
| Number of terminals | 56 | 53 |
|----------------------------|----|----|

| | | |
|-------------------------------------|-----|---|
| New and upgraded tracks (km) | 644 | 0 |
|-------------------------------------|-----|---|

¹⁾ Figures incl. the S-Bahn Hamburg GmbH company demerged in 1997

²⁾ Only switches and crossings within the jurisdiction of the Rail Network business unit

³⁾ Bored tunnel structures



Balance Sheet for the Company

Assets

| | 31 Dec 1997 (DM m) | 31 Dec 1996 (DM m) |
|--|-----------------------|-----------------------|
| A. Fixed assets | | |
| Intangible assets | 214 | 514 |
| Tangible assets | 54,671 | 44,765 |
| Financial assets | 3,639 | 2,300 |
| | 58,524 | 47,579 |
| B. Current assets | | |
| Inventories | 742 | 766 |
| Accounts receivable and other assets | 4,306 | 6,811 |
| Cash at bank and in hand | 443 | 705 |
| | 5,491 | 8,282 |
| C. Prepayments and accrued income | | |
| | 45 | 46 |
| Total assets | 64,060 | 55,907 |

Equity and liabilities

| | 31 Dec 1997 (DM m) | 31 Dec 1996 (DM m) |
|--|-----------------------|-----------------------|
| A. Equity | | |
| Subscribed capital | 4,200 | 4,200 |
| Capital reserves | 10,391 | 7,300 |
| Revenue reserves | 1,791 | 616 |
| Balance sheet profit | 385 | 978 |
| | 16,767 | 13,094 |
| B. Provisions | | |
| | 21,646 | 22,352 |
| C. Liabilities | | |
| | 25,547 | 20,288 |
| D. Accruals and deferred income | | |
| | 100 | 173 |
| Total equity and liabilities | 64,060 | 55,907 |

Balance Sheet for the Group

Assets

| | 31 Dec 1997 (DM m) | 31 Dec 1996 (DM m) |
|--|-----------------------|-----------------------|
| A. Fixed assets | | |
| Intangible assets | 524 | 551 |
| Tangible assets | 57,888 | 46,456 |
| Financial assets | 1,301 | 1,388 |
| | <u>59,713</u> | <u>48,395</u> |
| B. Current assets | | |
| Inventories | 1,181 | 958 |
| Accounts receivable and other assets | 4,353 | 7,242 |
| Securities | 101 | 101 |
| Cash at bank and in hand | 874 | 1,180 |
| | <u>6,509</u> | <u>9,481</u> |
| C. Prepayments and accrued income | | |
| | 65 | 59 |
| Total assets | <u><u>66,287</u></u> | <u><u>57,935</u></u> |

Equity and liabilities

| | 31 Dec 1997 (DM m) | 31 Dec 1996 (DM m) |
|--|-----------------------|-----------------------|
| A. Equity | | |
| Subscribed capital | 4,200 | 4,200 |
| Capital reserves | 10,391 | 7,300 |
| Revenue reserves | 1,427 | 556 |
| Balance sheet profit | 385 | 978 |
| Adjustment item for shares of other shareholders | 70 | 91 |
| | <u>16,473</u> | <u>13,125</u> |
| B. Special item for capital investment grants | | |
| | 11 | 191 |
| C. Special item with an equity portion | | |
| | 81 | 210 |
| D. Provisions | | |
| | 23,094 | 23,742 |
| E. Liabilities | | |
| | 26,382 | 20,438 |
| F. Accruals and deferred income | | |
| | 246 | 229 |
| Total equity and liabilities | <u><u>66,287</u></u> | <u><u>57,935</u></u> |

Profit and Loss Account for the Company

| | 31 Dec 1997 (DM m) | 31 Dec 1996 (DM m) |
|---|-----------------------|-----------------------|
| Sales | 24,468 | 24,401 |
| Inventory changes | -4 | 12 |
| Own work capitalised | 3,437 | 3,431 |
| Gross performance | 27,901 | 27,844 |
| Other operating income | 4,195 | 3,923 |
| Outlay on materials | -10,320 | -9,762 |
| Outlay on staff | -13,939 | -14,988 |
| Depreciation, depletion, and amortisation | -2,665 | -2,280 |
| Other operating expenses | -4,749 | -3,980 |
| | 423 | 757 |
| Income from participating interests | 246 | -38 |
| Interest accruing | -87 | -4 |
| Profit or loss from ordinary business activities | 582 | 715 |
| Taxes on income | 0 | 518 |
| Profit for the year | 582 | 1,233 |
| Profit brought forward from previous year | 978 | 361 |
| Transfer to revenue reserves | -1,175 | -616 |
| Balance sheet profit | 385 | 978 |

Consolidated Profit and Loss Account

| | 31 Dec 1997 (DM m) | 31 Dec 1996 (DM m) |
|---|-----------------------|-----------------------|
| Sales | 30,466 | 30,221 |
| Inventory changes | -182 | 12 |
| Own work capitalised | 3,791 | 3,459 |
| Gross performance | 34,075 | 33,692 |
| Other operating income | 4,188 | 4,243 |
| Outlay on materials | -13,136 | -12,665 |
| Outlay on staff | -16,943 | -17,369 |
| Depreciation, depletion, and amortisation | -3,168 | -2,713 |
| Other operating expenses | -4,310 | -4,243 |
| | 706 | 945 |
| Income from participating interests | -295 | -248 |
| Interest accruing | -52 | 24 |
| Profit or loss from ordinary business activities | 359 | 721 |
| Taxes on income | 32 | 407 |
| Profit for the year | 391 | 1,128 |
| Profit due to other shareholders | 15 | 32 |
| Loss to be borne by other shareholders | 20 | 3 |

Substantial Investments

| | Equity stake in % | Net worth 31/12/97 (DM m) | Results ¹⁾ | | Turnover | | Workforce at 31 Dec ²⁾ | |
|---|----------------------|---------------------------------|-----------------------|----------------|----------------|----------------|--------------------------------------|--------|
| | | | 1997 (DM m) | 1996 (DM m) | 1997 (DM m) | 1996 (DM m) | 1997 | 1996 |
| Tourism/Long-Distance Travel | | | | | | | | |
| Deutsches Reisebüro GmbH | 100,0 | 143 | 10,1 | 12,2 | 1.355,8 | 1.300,4 | 2.340 | 2.064 |
| AMEROPA-Reisen GmbH | 100,0 | 7 | 2,3 | 1,2 | 174,2 | 180,9 | 119 | 151 |
| Bayern Express & P. Kühn Berlin GmbH | 100,0 | 9 | 2,1 | 3,3 | 34,5 | 39,0 | 260 | 321 |
| DFO Deutsche Fährgesellschaft Ostsee mbH | 100,0 | 151 | 129,5 | -88,6 | 296,1 | 261,7 | 445 | 474 |
| Deutsche Touring Gesellschaft mbH | 60,8 | 11 | 3,5 | 6,0 | 102,4 | 97,9 | 170 | 172 |
| Local Transport Services | | | | | | | | |
| BBHG Bahnbus-Holding – Group – | 100,0 | – | 124,1 | 142,7 | 2.408,4 | 2.362,5 | 6.800 | 6.496 |
| S-Bahn Berlin GmbH | 100,0 | 324 | 3,4 | 39,4 | 813,6 | 896,9 | 4.414 | 4.200 |
| S-Bahn Hamburg GmbH | 100,0 | 122 | 0,1 | | 291,1 | | 1.305 | |
| Service Enterprises | | | | | | | | |
| MITROPA AG | 100,0 | 17 | 1,0 | 1,8 | 503,4 | 462,3 | 4.651 | 5.317 |
| dvm Deutsche Verkehrsdienstleistungs- u. Management – Group – | 100,0 | – | 20,2 | 17,8 | 763,6 | 710,8 | 12.680 | 13.271 |
| Freight Operations | | | | | | | | |
| Transfracht Internationale Gesellschaft für kombinierten Güterverkehr mbH | 100,0 | 1 | -1,3 | 0,2 | 324,6 | 104,3 | 198 | 178 |
| NUCLEAR CARGO + Service GmbH | 100,0 | 13 | 4,5 | 3,6 | 30,0 | 29,5 | 51 | 57 |
| Kombiwaggon Vermarktungs GmbH | 100,0 | 2 | 1,4 | 0,2 | 37,9 | 30,6 | 38 | 40 |
| TRANSA Spedition GmbH | 50,0 | 16 | 5,1 | 3,7 | 355,1 | 346,0 | 334 | 333 |
| Miscellaneous | | | | | | | | |
| Deutsche Eisenbahn-Reklame GmbH | 100,0 | 11 | 13,3 | 14,0 | 215,4 | 209,5 | 230 | 274 |
| DBG Deutsche Bahn Gleisbau GmbH | 100,0 | 15 | 0,2 | 0,3 | 74,2 | 99,1 | 213 | 247 |
| lbb Ingenieur-, Brücken- und Tiefbau GmbH | 100,0 | 4 | 1,6 | 1,1 | 120,4 | 104,7 | 343 | 383 |
| TLC Transport-, Informatik- und Logistik-Consulting GmbH | 100,0 | 5 | 5,3 | 2,2 | 182,8 | 90,8 | 411 | 229 |
| DE-Consult Deutsche Eisenbahn-Consulting GmbH | 74,0 | 29 | -28,6 | 10,7 | 291,6 | 262,7 | 1.312 | 1.639 |
| DVA Deutsche Verkehrs-Assekuranz-Vermittlungs-GmbH | 65,0 | 2 | 7,8 | 8,2 | 28,1 | 20,0 | 41 | 39 |
| DBEnergie GmbH & Co. KG | 100,0 | 1.013 | 9,0 | | 1.708,3 | | 607 | |

¹⁾ Results before tax and profit transfer

²⁾ Employees incl. apprentices

Contact Details

■ Management Representatives for the Federal States

- **Baden-Württemberg**
Dr. Peter Schnell
Heilbronner Strasse 7
70174 Stuttgart
Phone: ++49 711 2092 3300
Fax: ++49 711 2092 3600
- **Bavaria**
Prof. Peter Lisson
Richelstrasse 3
80634 München
Phone: ++49 89 1308 3300
Fax: ++49 89 1308 1911
- **Berlin**
Dr. Axel Nawrocki
Invalidenstrasse 19
10115 Berlin
Phone: ++49 30 297 19801
Fax: ++49 30 29743892
- **Brandenburg**
Hans Leister
Martin-Luther-Strasse 1-1a
10777 Berlin
Phone: ++49 30 297 45800
Fax: ++49 30 297 45809
- **Bremen**
Helmut Pohl
Joachimstrasse 8
30159 Hannover
Phone: ++49 511 286 3300
Fax: ++49 511 286 4131
- **Hamburg**
Dr. Hermann Gause
Museumstrasse 39
22765 Hamburg
Phone: ++49 40 3918 3000
Fax: ++49 40/ 3918 3006
- **Hesse**
Dr. Rudolf Göbertshahn
Friedrich-Ebert-Anlage 35
60327 Frankfurt am Main
Phone: ++49 69 265 3300
Fax: ++49 69 265 3600
- **Mecklenburg-Vorpommern**
Horst Gibtner
Zum Bahnhof 15
19053 Schwerin
Phone: ++49 385 750 3300
Fax: ++49 385 750 3349
- **Lower Saxony**
Helmut Pohl
Joachimstrasse 8
30159 Hannover
Phone: ++49 511 286 3300
Fax: ++49 511 286 4131
- **North-Rhine Westphalia**
Wolfgang Maurer
Konrad-Adenauer-Ufer 3-5
50668 Köln
Phone: ++49 221 141 3300
Fax: ++49 221 141 3100
- **Rhineland Palatinate**
Dr. Rudolf Göbertshahn
Friedrich-Ebert-Anlage 35
60327 Frankfurt am Main
Phone: ++49 69 265 3300
Fax: ++49 69 265 3600
- **Saarland**
Dr. Rudolf Göbertshahn
Friedrich-Ebert-Anlage 35
60327 Frankfurt am Main
Phone: ++49 69 265 3300
Fax: ++49 69 265 3600
- **Saxony**
Hans-Jürgen Lücking
Ammonstrasse 8
01069 Dresden
Phone: ++49 351 461 3300
Fax: ++49 351 461 2703
- **Saxony-Anhalt**
Jobst Paul
Ernst-Kamieth-Strasse 2
06112 Halle
Phone: ++49 345 215 3300
Fax: ++49 345 215 3388

- **Schleswig-Holstein**
Dr. Hermann Gause
Museumstrasse 39
22765 Hamburg
Phone: ++49 40 3918 3000
Fax: ++49 40/ 3918 3006

- **Thuringia**
Gerold Brehm
Bahnhofstrasse 23
99084 Erfurt
Phone: ++49 361 300 3300
Fax: ++49 361 562 4087

■ Corporate Communications Division

Deutsche Bahn AG
Zentralbereich
Konzernkommunikation

Stephensonstrasse 1
60326 Frankfurt am Main
Fax: ++49 69 9733 7570

Holzmarktstrasse 17
10880 Berlin
Fax: ++49 30 297 61919

- **Christine Geißler-Schild**
Spokesperson
Research & Technology
Phone: ++49 69 265 6887

- **Martin Katz**
Spokesperson
Long-Distance Passenger
Traffic
Phone: ++49 69 265 7707

- **Hartmut Sommer**
Spokesperson
Local Passenger Traffic
Phone: ++49 69 265 7735

- **Anfried Baier-Fuchs**
Head of Corporate
Communications and
Spokesperson for
Deutsche Bahn
Phone: ++49 69 265 61130
Phone: ++49 30 297 61130

- **Renate Bader**
Spokesperson
Passenger Stations
Phone: ++49 69 265 7678

- **Patrizia Westermann**
Head of Publicity
Phone: ++49 30 297 61139

- **Michael Adam**
Spokesperson
Freight Traffic
Phone: ++49 6131 15 60200

- **Burkhard Tewinkel**
Head of Internal
Communications
Phone: ++49 30 297 61141

- **Reiner Latsch**
Spokesperson
Track Infrastructure
Phone: ++49 69 265 6304

- **Christian Hoppe**
Deputy Spokesperson for
Deutsche Bahn AG
Head of Media Liaison
Phone: ++49 69 265 6204

Contact Details

■ Baden-Württemberg

Stuttgart
Ursula Zimmermann
Heilbronner Strasse 7
70174 Stuttgart
Phone: ++49 711 2092 3498
Fax: ++49 711 2092 3303

Karlsruhe office
Roland-J. Malchow
Schwarzwaldstrasse 86
76133 Karlsruhe
Phone: ++49 721 938 3498
Fax: ++49 721 938 2855

■ Bavaria

Munich
Franz Lindemair
Richelstrasse 3
80634 München
Phone: ++49 89 1308 1498
Fax: ++49 89 1308 1901

Nuremberg office
Horst Wendler
Sandstrasse 38/40
90443 Nürnberg
Phone: ++49 911 219 3755
Fax: ++49 911 219 3000

■ Berlin/Brandenburg

Berlin
Dr. Marlene Schwarz
Holzmarktstrasse 17
10880 Berlin
Phone: ++49 30 297 61138
Fax: ++49 30 297 61909

■ Hamburg/ Schleswig-Holstein/ Mecklenburg- Vorpommern

Hamburg
Helmut Kujawa
Museumstrasse 39
22765 Hamburg
Phone: ++49 40 3918 4498
Fax: ++49 40 395283

Schwerin office
Edith Vahl
Zum Bahnhof 15
19053 Schwerin
Phone: ++49 385/ 750 3308
Fax: ++49 331/ 750 3309

■ Hesse/Rhineland-Palatinate/ Saarland

Frankfurt a.M.
Gerd Falser
Stephensonstrasse 1
60326 Frankfurt am Main
Phone: ++49 69 265 6743
Fax: ++49 69 265 14178

Saarbrücken office
Horst Rohrbacher
Am Hauptbahnhof 4
66111 Saarbrücken
Phone: ++49 681 308 3498
Fax: ++49 681 308 2509

■ Lower Saxony/ Bremen

Hanover
Hans-Jürgen Frohns
Joachimstrasse 8
30159 Hannover
Phone: ++49 511 286 3498
Fax: ++49 511 286 3345

■ North Rhine-Westphalia

Essen
Manfred Pietschmann
Bismarckplatz 1
45128 Essen
Phone: ++49 201 182 3498
Fax: ++49 201 182 4716

Cologne
Werner Marienfeld
Konrad-Adenauer-Ufer 3-5
50668 Köln
Phone: ++49 221 141 3498
Fax: ++49 221 141 3598

■ Saxony

Dresden
Birgit Röher
Ammonstrasse 8
01069 Dresden
Phone: ++49 351 461 3308
Fax: ++49 351 461 2708

■ Saxony-Anhalt

Halle
Erika Frost
Ernst-Kamieth-Strasse 2
06112 Halle
Phone: ++49 345 215 3308
Fax: ++49 345 215 4325

■ Thuringia

Erfurt
Renate Wicher
Bahnhofstrasse 23/24
99084 Erfurt
Phone: ++49 361 300 3326
Fax: ++49 361 6430831

Glossary of terms

- **Gross tonne-kilometre**
Product of the gross weight of wagons and the actual distance carried
- **Net tonne-kilometre**
Product of net weight (actual volume of goods transported) and actual distance carried
- **Passenger-kilometre (pkm)**
Product of the number of persons carried and the average distance travelled; a quantitative characteristic
- **Private siding**
Length of railway track worked only by specified types of operator (owners of private sidings). It is only used for business purposes and does not form part of the public service network.
- **Chargeable distance**
In freight traffic, generally the shortest distance; ideally, it should constitute the distance between two points or areas "as the crow flies".
- **Chargeable tonnage**
Actual volume of goods transported for charging purposes on the basis of a minimum chargeable weight (lower limit of volume of freight)
- **Revenue tonne-kilometre**
Product of chargeable tonnage and chargeable distance
- **Switches and points**
Single switch = 1 unit
Double switch = 2 units
Single diamond crossing = 2 units
Double diamond crossing = 4 units
Crossing = 1 unit

Published by

Deutsche Bahn AG Board of Management
Corporate Communications Division
Holzmarktstrasse 17
10880 Berlin

Stephensonstrasse 1
60326 Frankfurt am Main
Phone: ++49 69 265 6404
Fax: ++49 69 265 7820

Design and layout by
Deutsche Bahn Medien GmbH
Frankfurt am Main

Photography by
Ralf Braum
Frankfurt am Main

Produced by
LGS, Frankfurt am Main
Greven & Bechtold GmbH, Hürth

Printed for environmental reasons
on 50 % non-chlorine bleached
and 50 % recycled paper

May 1998